

2021 학년도 기계공학과 CADD (MEE1002)

CADD(Computer Aided Design and Drafting)

한양대학교
터보기계연구실
Prof. Keun Ryu

2021년 10월 14일



HANYANG UNIVERSITY



CONTENTS

I 3D 실습 (Stiffner, Solid, Dress-up features)

II 예제 도면을 통한 실습

CADD (Computer Aided Design and Drafting)



3D 실습 (Stiffner, Solid, Dress-up features)

1

CADD (Computer Aided Design and Drafting)

3D 실습 (Stiffner, Solid, Dress-up features)

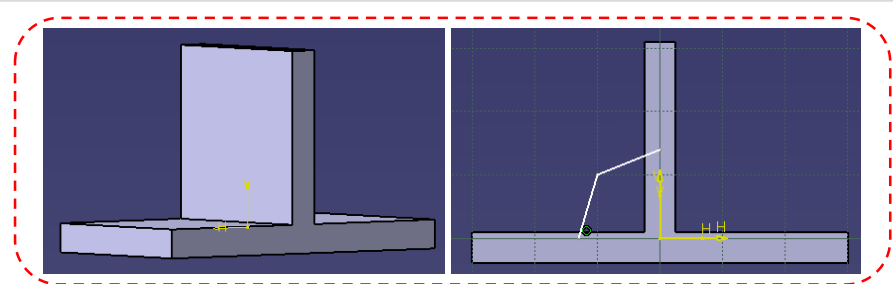
Stiffner



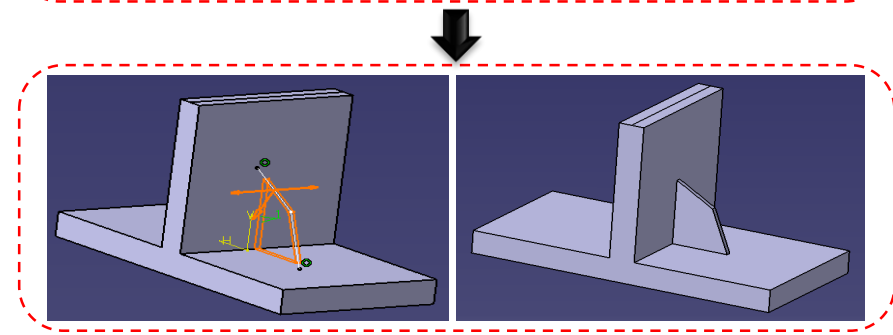
- Profile로 Solid 외부에 보강재 생성

- ① Stiffner를 생성할 Solid에 보강재 형상의 Sketch를 그린다
- ② Stiffner 아이콘을 클릭 후 보강재를 생성한다

①



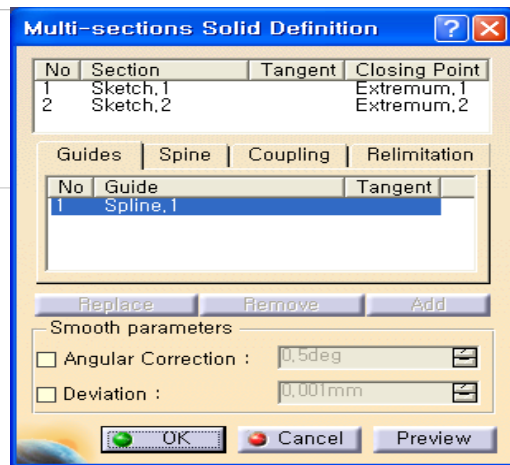
②



1 CADD (Computer Aided Design and Drafting)

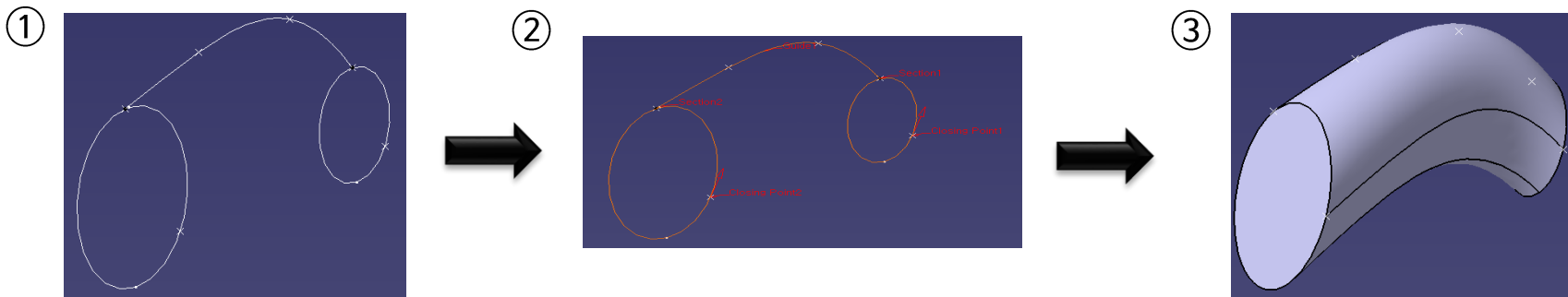
3D 실습 (Stiffner, Solid, Dress-up features)

Multi sections Solid - Guide line



- 2개 이상의 Profile로 Guide Line을 따라 연결하여 Solid를 생성

- ① Guide Line과 양 끝 지점의 형상을 Sketch로 그린다
- ② Multi sections Solid 아이콘을 클릭 후, Section에는 양 끝을 Guide에는 Guide Line을 선택한다
- ③ 생성



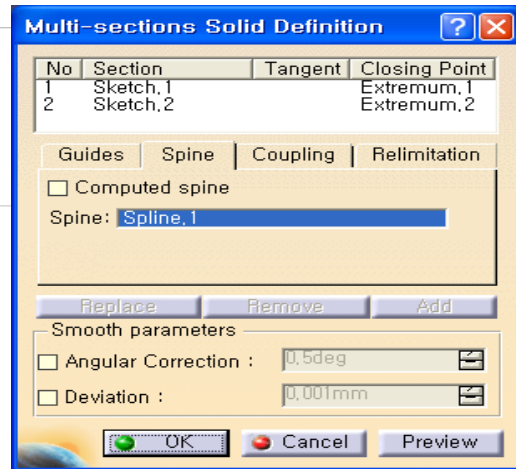
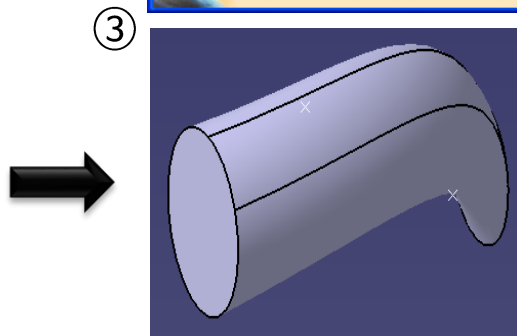
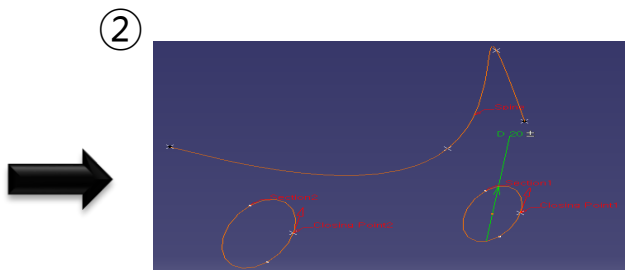
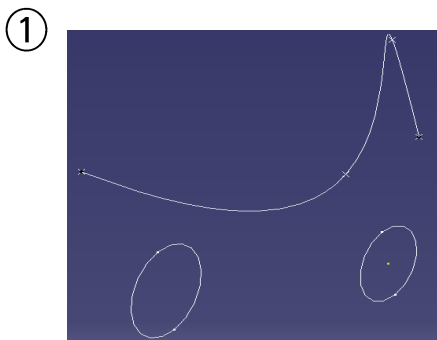
1 CADD (Computer Aided Design and Drafting)

3D 실습 (Stiffner, Solid, Dress-up features)

Multi sections Solid - Spline



- 2개 이상의 Profile로 Guide Line을 따라 연결하여 Solid를 생성
- ① Guide Line과 양 끝 지점의 형상을 Sketch로 그린다
 - ② Multi sections Solid 아이콘을 클릭 후, Section에는 양 끝을 Spline 탭에서 Spline을 선택한다
 - ③ 생성



1

CADD (Computer Aided Design and Drafting)

3D 실습 (Stiffner, Solid, Dress-up features)

Multi sections Solid - Coupling



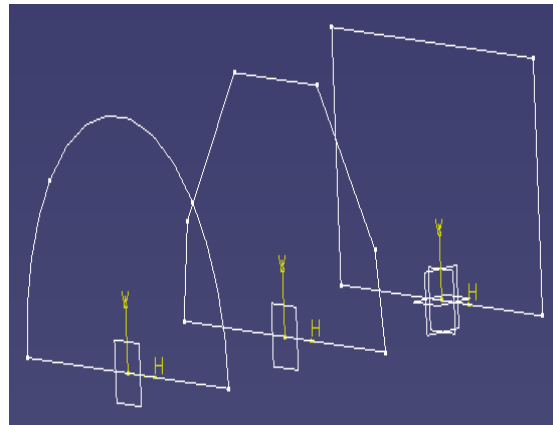
- 2개 이상의 Profile로 Guide Line을 따라 연결하여 Solid를 생성

① Guide Line과 양 끝 지점의 형상을 Sketch로 그린다

② Multi sections Solid 아이콘을 클릭 후, Coupling 탭에서 Sketch들을 선택한다

③ 생성

①



1

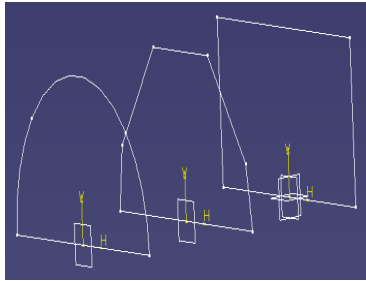
CADD (Computer Aided Design and Drafting)

3D 실습 (Stiffner, Solid, Dress-up features)

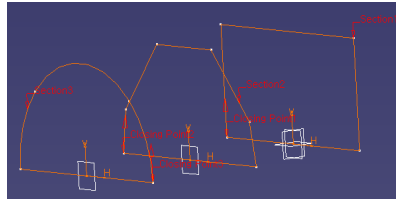
Multi sections Solid – Coupling



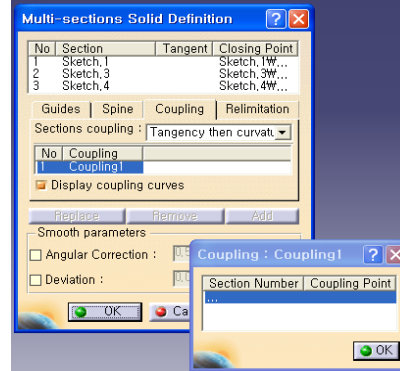
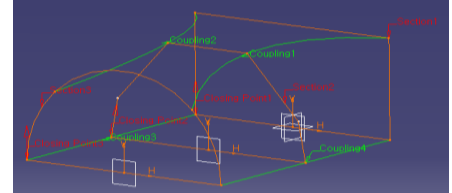
①



②



③



1

CADD (Computer Aided Design and Drafting)

3D 실습 (Stiffner, Solid, Dress-up features)

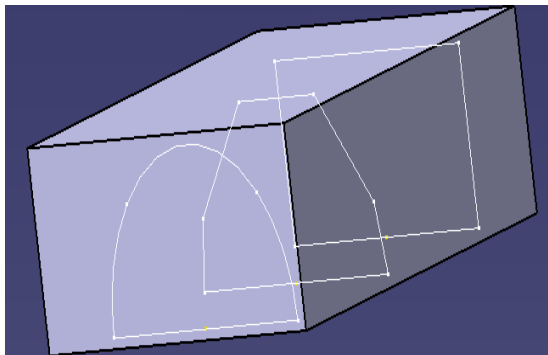
Remove Multi sections Solid



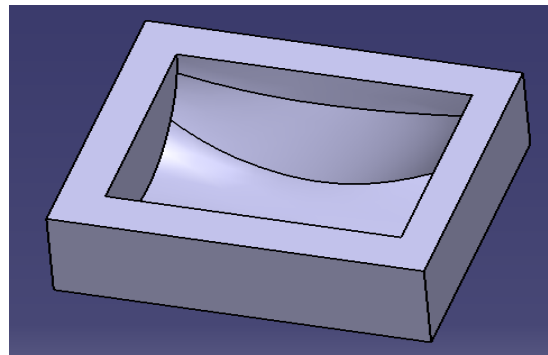
- **Multi section Solid로 Solid 제거**

- ① Solid에서 제거할 형상을 Sketch로 그린다
- ② Remove Multi sections Solid 아이콘을 클릭 후, Coupling 탭에서 Sketch들을 선택한다

①



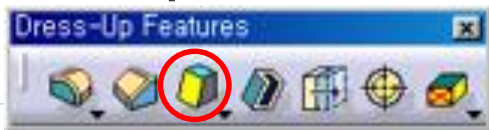
②



1

CADD (Computer Aided Design and Drafting)

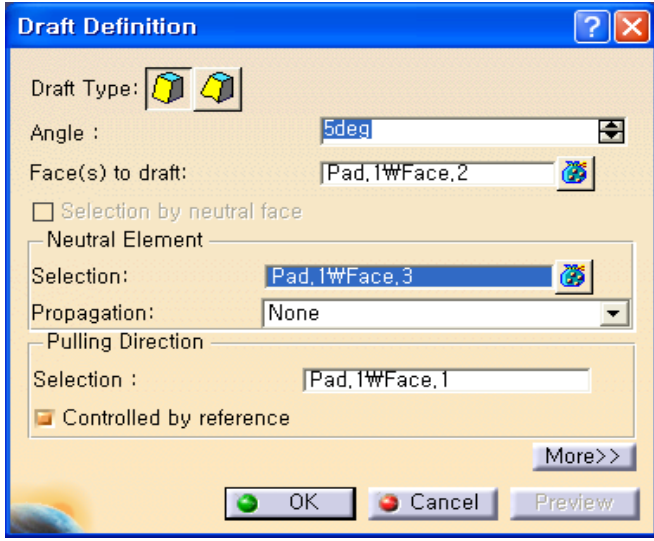
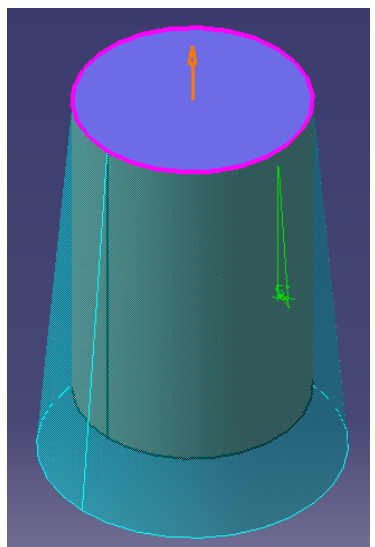
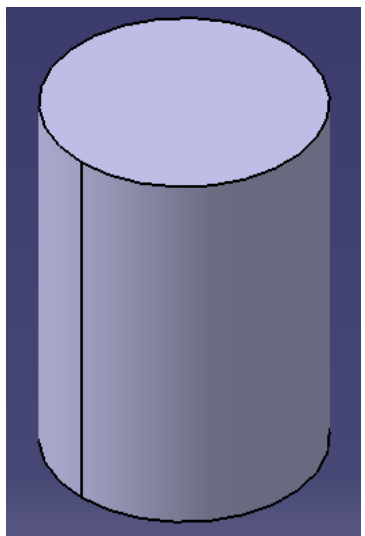
3D 실습 (Stiffner, Solid, Dress-up features)



Draft



각각의 선택된 면에 각도를 주어서 잘라낸다

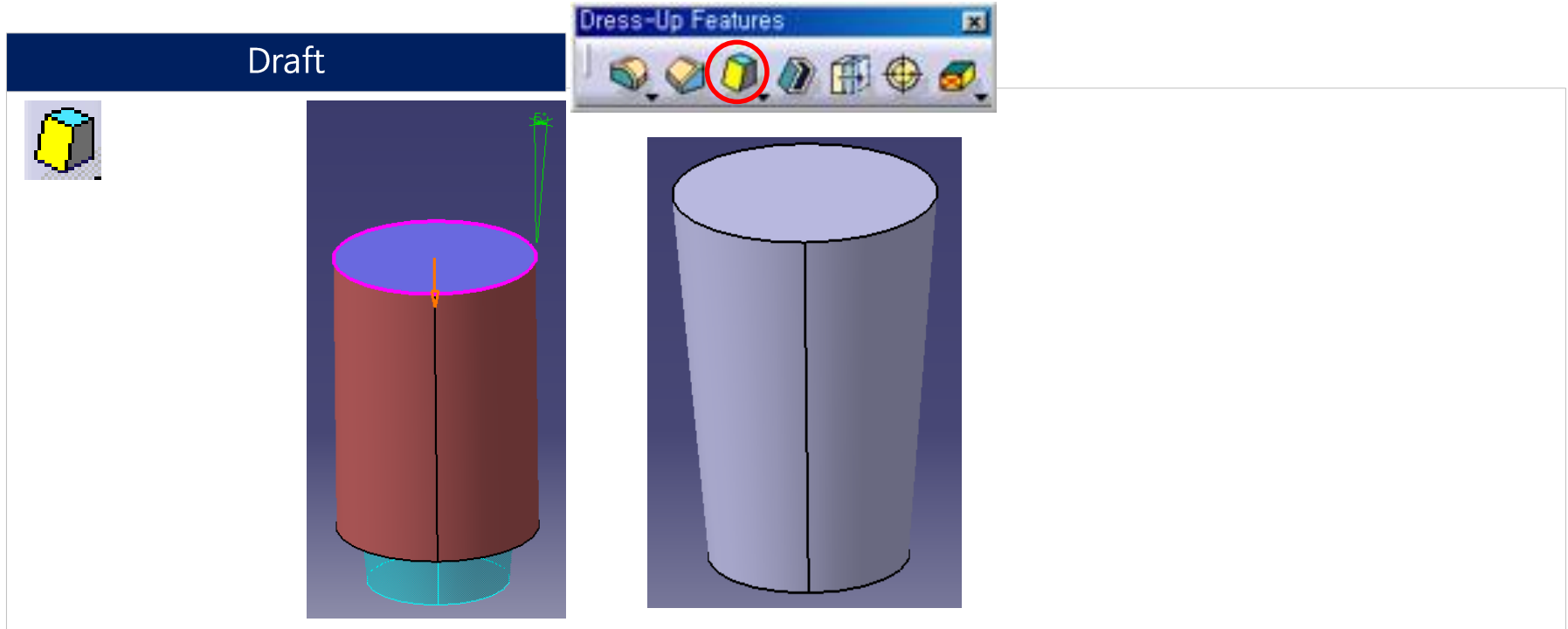


화살표를 누르면 반대방향으로 Draft Angle이 실행된다

1

CADD (Computer Aided Design and Drafting)

3D 실습 (Stiffner, Solid, Dress-up features)

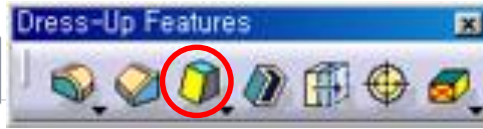


1

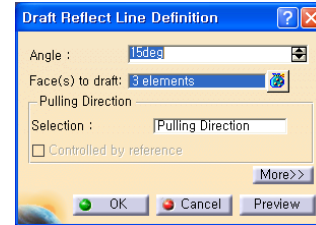
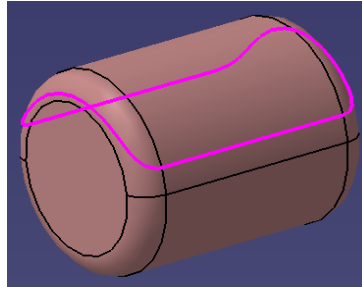
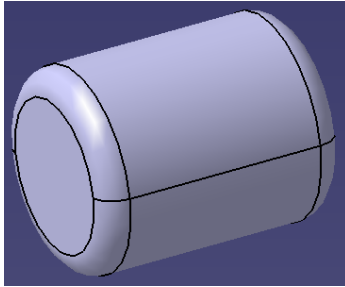
CADD (Computer Aided Design and Drafting)

3D 실습 (Stiffner, Solid, Dress-up features)

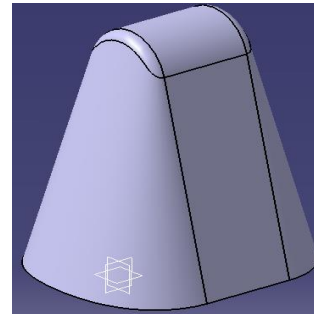
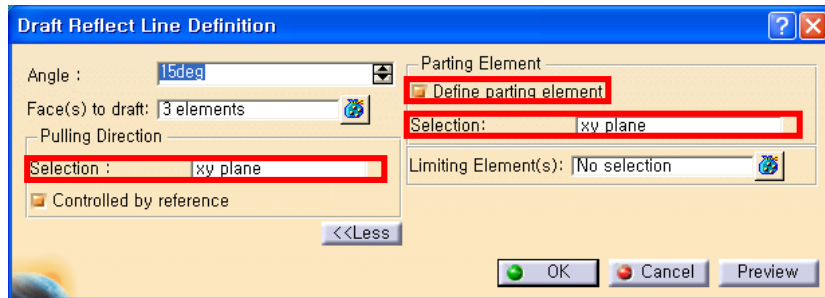
Draft Reflect Line



- 보이는 부분까지만 드래프트 된다



3개의 면을 선택

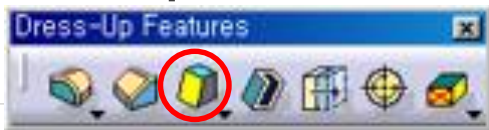


1

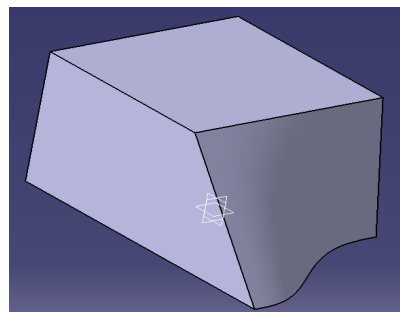
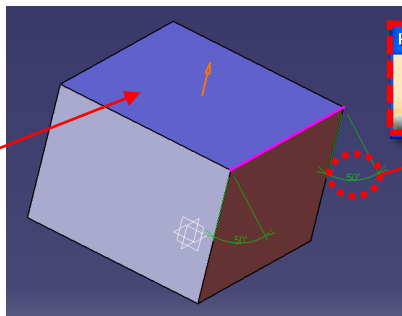
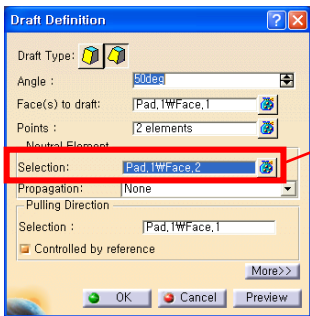
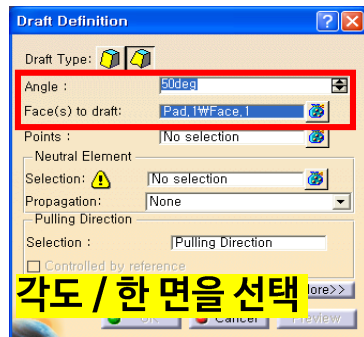
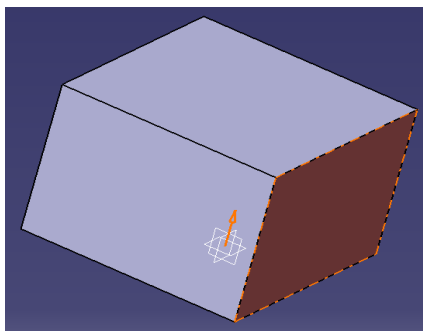
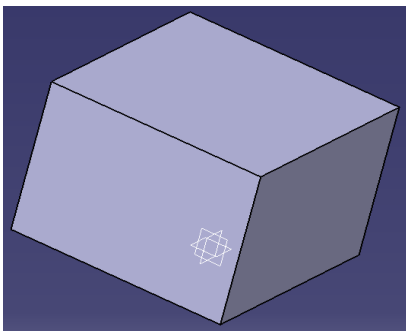
CADD (Computer Aided Design and Drafting)

3D 실습 (Stiffner, Solid, Dress-up features)

Variable Angle Draft



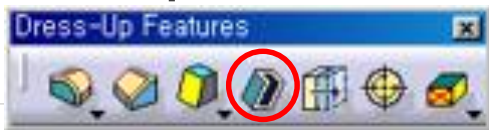
- 하나의 면만 지정하여 드래프트 한다



1

CADD (Computer Aided Design and Drafting)

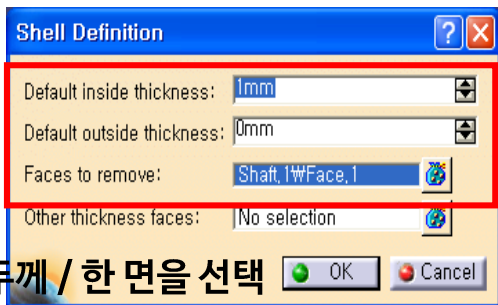
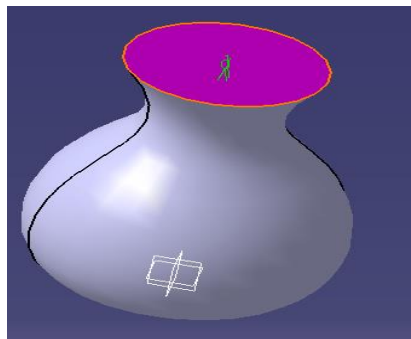
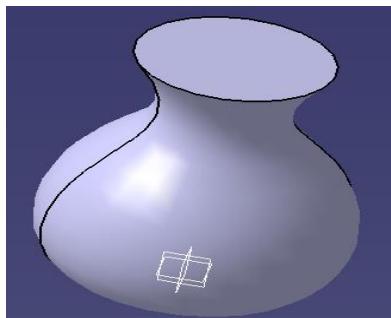
3D 실습 (Stiffner, Solid, Dress-up features)



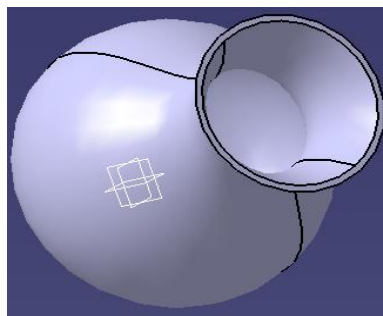
Shell



- 원하는 두께의 외관을 남기고 내부의 Solid 제거



두께 / 한 면을 선택



1

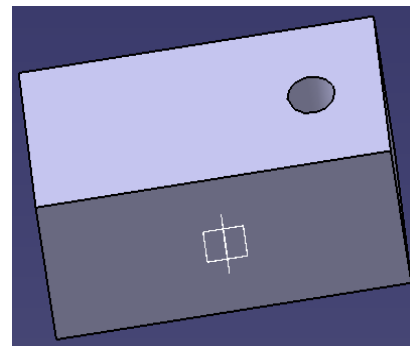
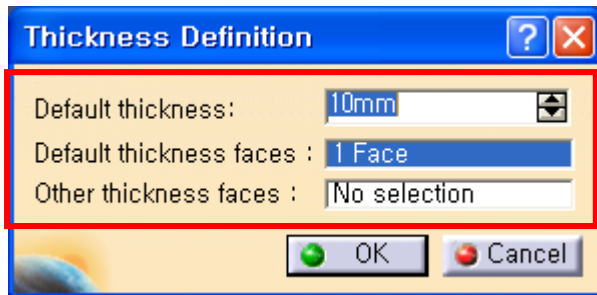
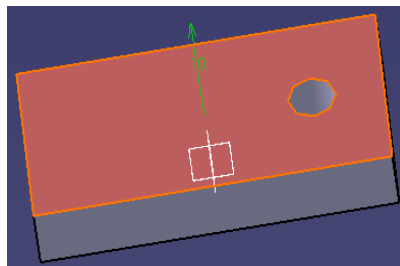
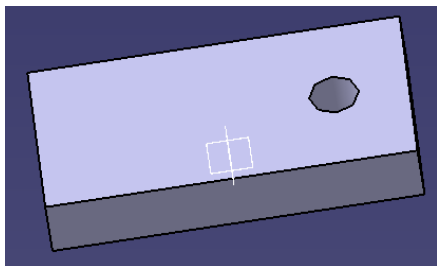
CADD (Computer Aided Design and Drafting)

3D 실습 (Stiffner, Solid, Dress-up features)

Thickness



- 임의의 방향으로 두께를 부여



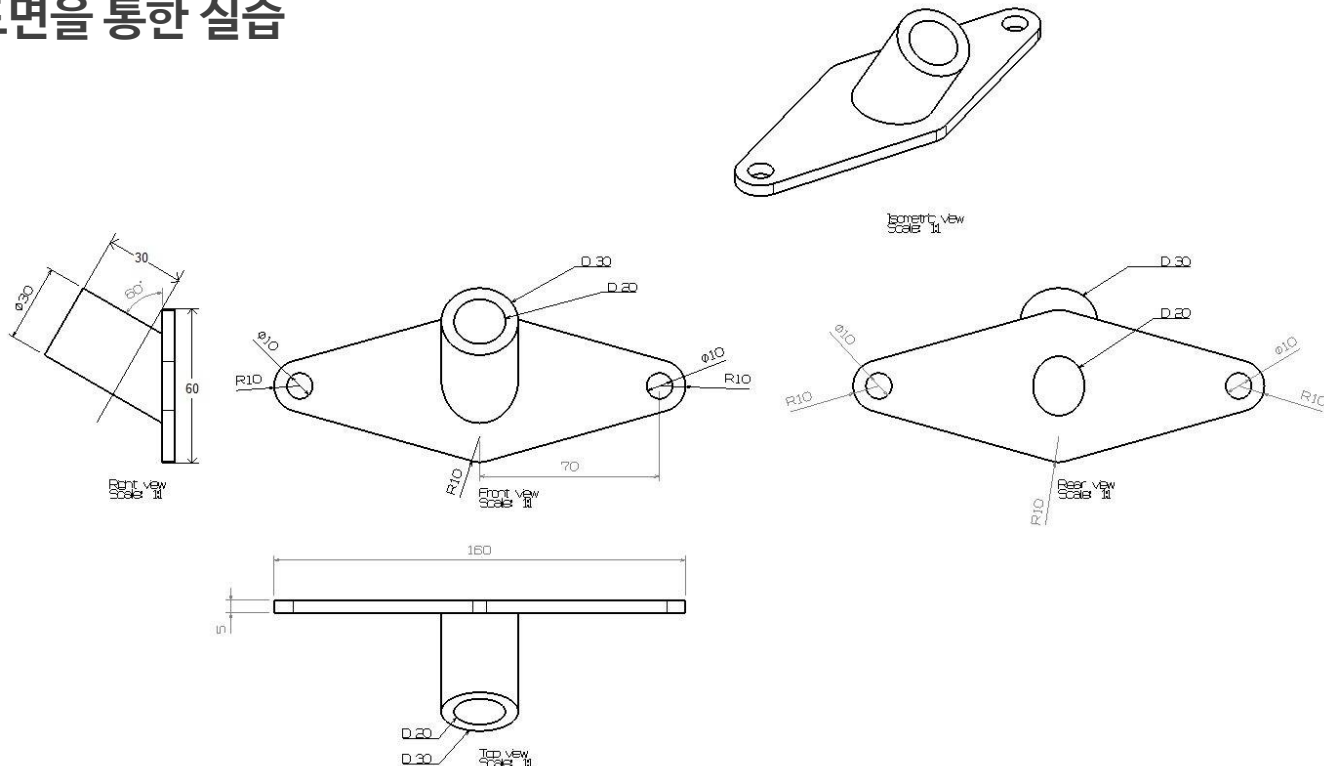
두께 / 한 면을 선택

CADD (Computer Aided Design and Drafting)

예제 도면을 통한 실습

3 CADD (Computer Aided Design and Drafting)

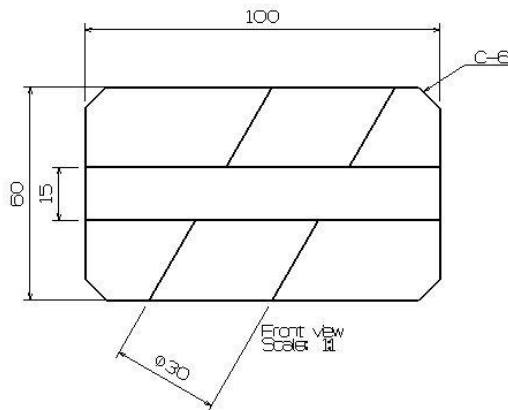
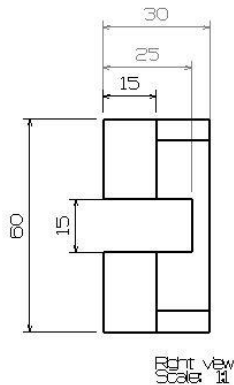
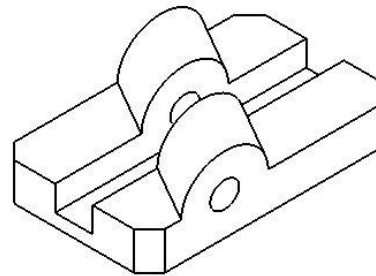
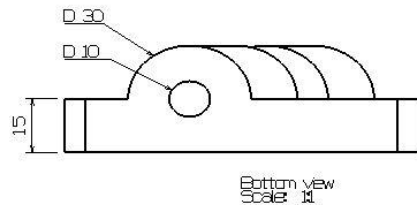
예제 도면을 통한 실습



3

CADD (Computer Aided Design and Drafting)

예제 도면을 통한 실습



감사합니다